

## LED LIGHT BAR KIT

WILL FIT E-Z-GO® TXT®

### INSTALLATION INSTRUCTIONS

**INCLUDED:**

LED Light Bar  
 Light Bar Brackets  
 LED Tail Lights  
 Upgrade Harness  
 Light Switch

**Hardware Pack**

6- 6x20mm Bolts  
 2- 6mm Nylock Nuts  
 8- 6mm Washers

**TOOLS NEEDED:**

#2 Phillips Tip  
 Cutting Tool  
 Sandpaper  
 Power Drill  
 15/32" Drill Bit  
 1/4" Drill Bit  
 10mm Socket  
 10mm Wrench  
 Scissors & Tape



LED Light Bar



Tail Lights



Light Bar Brackets

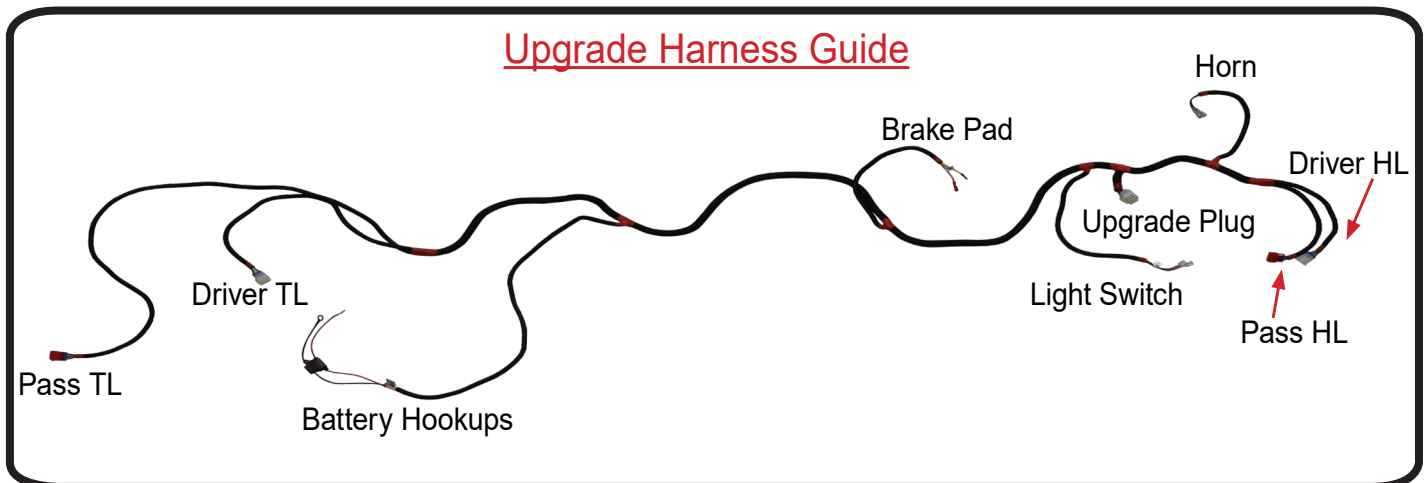


Upgrade Harness




Light Switch

### Upgrade Harness Guide



Engage Parking Brake and turn key to the OFF position. Run harness down the driver side of the frame so it doesn't hang. Secure with wire ties to hold in place while you are riding.

Red 3 pins of harness go to the passenger side lights on front and rear.

 1/4" Drill Bit, 10mm Socket & Wrench

**A)** Loosen top bolts enough to attach top of **Mounting Brackets** using slotted hole in brackets.

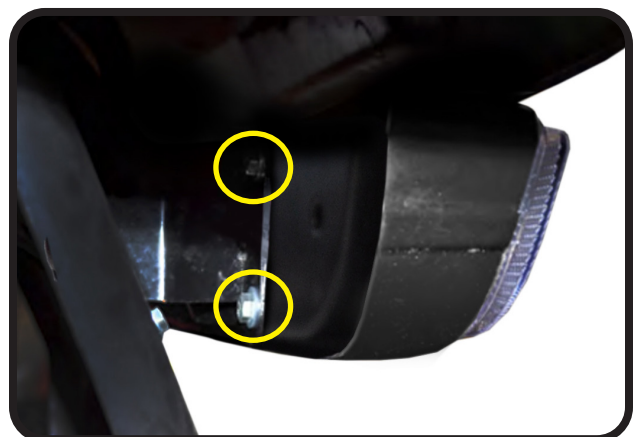
**B)** Drill out the factory bumper rivets and use supplied 6x20mm bolts and hardware to attach bottom of brackets to factory bumper. Tighten Hardware.


**Important:** The **Mounting Bracket** light bar mounts point to the outside of the cart as shown.

 10mm Socket or Wrench

Install the **Light Bar** to **Mounting Brackets** using supplied 6x20mm bolts and washers. Once all four bolts are in place, then tighten.

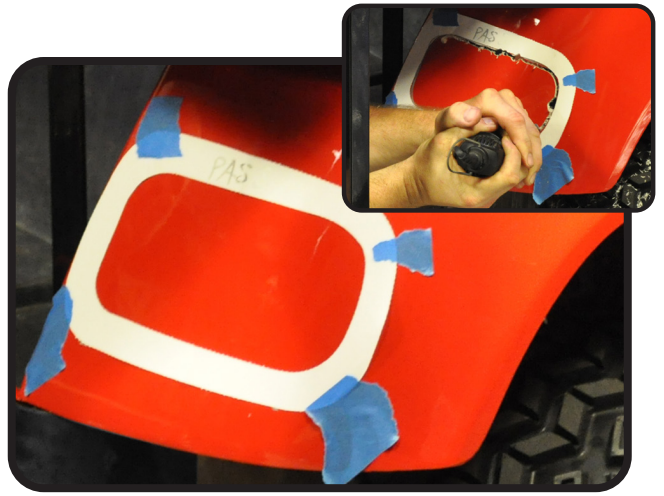
Plug the Light Bar into the Harness, Red 3 pin connector to passenger side and white 3 pin connector to driver's side lights.




 Scissors, Tape, Marker, 15/32" Bit, Rotary Cutting Tool

Place tail light template against cart using instructions on template. Using a marker, trace the template onto the cart.

Drill a pilot hole and cut out the shape of the tail light using a cutting tool. Use sandpaper to clean edges.



 #2 Phillips Tip

Attach **Tail Light** to harness, then insert tail light and attach to cart using provided hardware. Connect red connector on harness to passenger side lights and white connector to driver's side lights.

*\*Flip template over to use on other side and repeat Steps 6 & 7.*



 15/32" Drill Bit

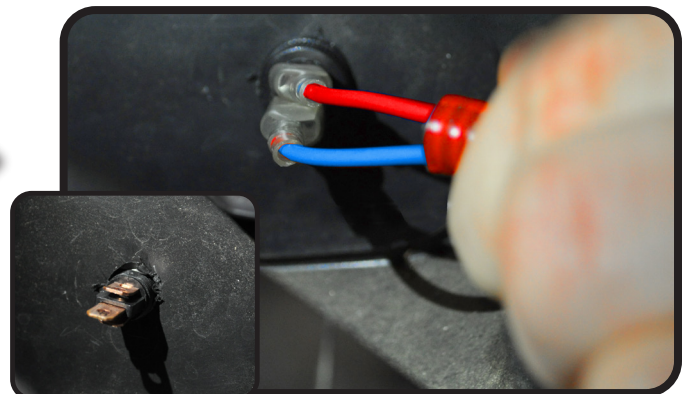
Using a 15/32" bit, drill out the hole for the **Light Switch** at your desired location.

*\*Drill gently and ensure mounting location is free of obstacles.*

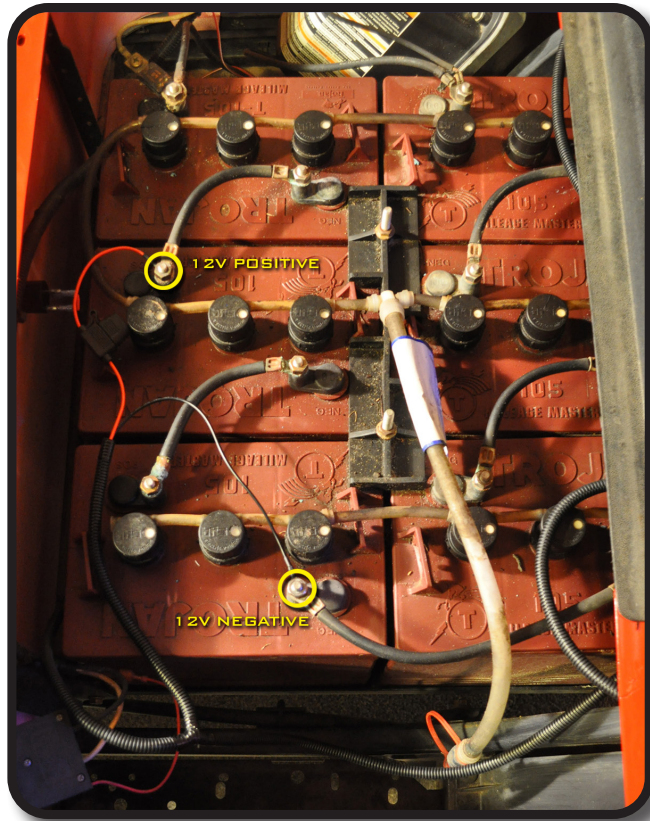


Feed threaded end of switch through the dash where the hole was drilled.

Attach harness to switch, there is not wire orientation. Attach nut to secure and reattach dash panel.







***IMPORTANT: This light kit is designed for 12V power. A 48-12v or 16-12 voltage reducer will be needed if no 12v power is available.***

Connect the wiring harness to one battery's positive connection and another battery's negative connection as shown. Be sure the two batteries used are directly linked to together.

# INSTALLATION COMPLETE