

Jake's Universal Winch Mount

Part# 7286

Mounting Guide

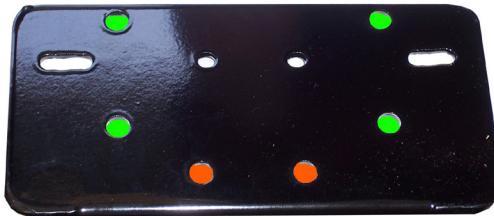
Club Car DS- Drill orange holes and bolt to the frame using 3/8" x 1" bolts & nuts.



E-Z-GO - Hold the winch mount to the frame and choose which holes best suit your cart. Drill holes and bolt to the frame using 3/8" x 2" bolts & nuts.



Yamaha G2-21 Use qty 2-1.75" muffler clamps on the green holes & use stock a-arm bolts to mount to the a-arms through the orange holes.



Yamaha G2-22 Mount to the existing holes in the frame using the orange holes & qty 2-2 3/8" x 1" bolts, qty 4- 3/8" flat washers, qty 2- 3/8" nuts.

