



## Rear Flip Seat Kit Installation Instructions for Yamaha® Drive 2®

### KIT INCLUDES:



Main Brackets

Footrest  
Brackets



Seat Back  
Brackets

Seat Frame



Main Bracket Brace



Lean Back Cushion

Seat Back  
Support Bar



Armrests



Footrest



Bagwell Brackets



Seat Bottom Cushion



Tools Required: 5mm Allen Wrench & 13mm Socket

Switch the key to the OFF position and engage the Parking Brake.

Remove hardware from struts and take off canopy. Retain hardware and canopy.

### STEP 1



4mm Allen Wrench

Remove hardware from rear struts to free gutters. Remove gutters by sliding them up and out of the rear body. Retain hardware and gutters.

### STEP 2



13mm Socket

Remove rear struts from front lean back cushion. Retain all.

### STEP 3



10mm Socket or Wrench

Remove and retain the front lean back cushion.

### STEP 4





12mm Socket

Remove strut cover boots and sweater basket. Retain boots & hardware, discard basket.

### STEP 5



12mm & 13mm Socket

**A)** Attach new **Main Brackets** with strut tabs towards outside of cart using retained hardware from STEP 5.

**B)** Attach rear struts to **Main Brackets** using retained hardware from STEP 3.

### STEP 6



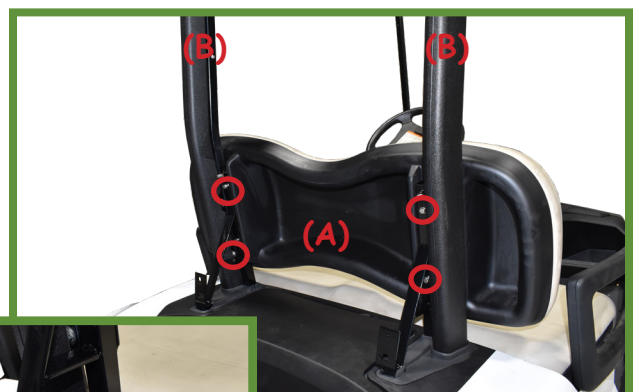
10mm Socket or Wrench

**A)** Attach front seat lean back to **Main Brackets** using hardware retained from Step 4.

**B)** Reattach factory gutters to struts using hardware retained from Step 2.

**C)** Replace strut cover boots, the boots will need to be cut at two points so that it fits around brackets.

### STEP 7







13mm Socket

Attach **Main Bracket Brace** to **Main Brackets** using 8mm nylock nuts from Pack 1.

### STEP 8

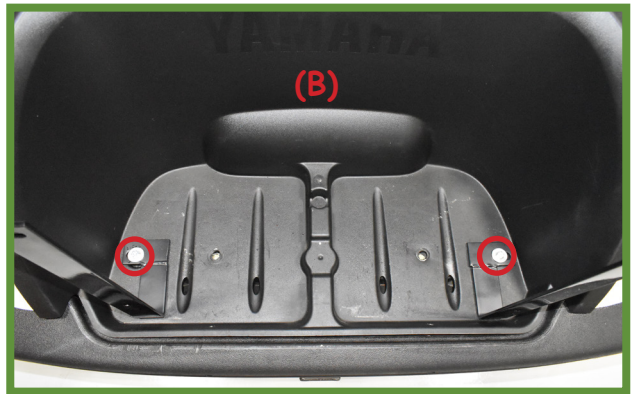
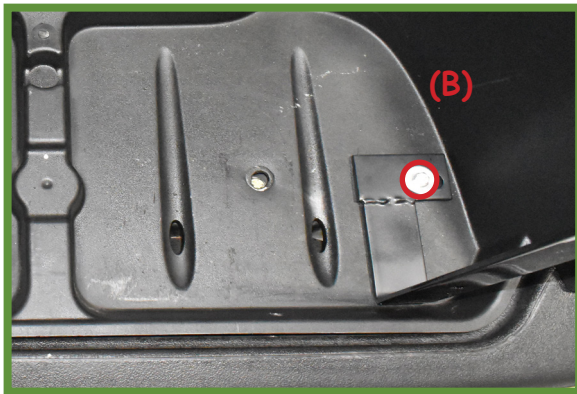


5mm Allen Wrench, 10mm Socket & Wrench

**A)** Remove factory bolts located in bagwell shown.

**B)** Place **Bagwell Brackets** in bagwell as shown below and secure with 6x90mm bolts, fender washers, flat washers, & nylock nuts.

### STEP 9

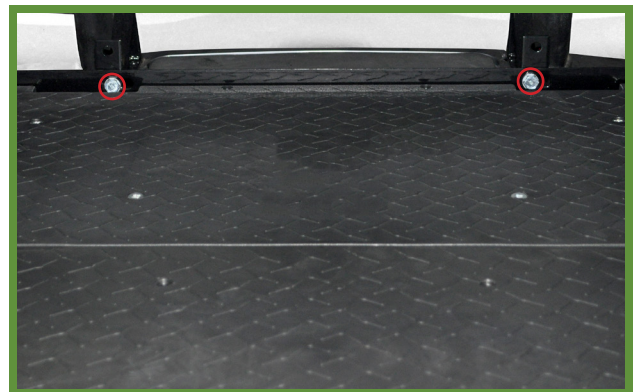


17mm Socket & Wrench

**IMPORTANT:** Do not tighten any hardware until after Step 17 is complete.

### STEP 10

Attach **Seat Frame** to **Main Brackets** using hardware from Pack 1.





17mm Socket & Wrench

Attach **Seat Frame** to the **Bagwell Brackets** using 10x25mm bolts from Pack 1.

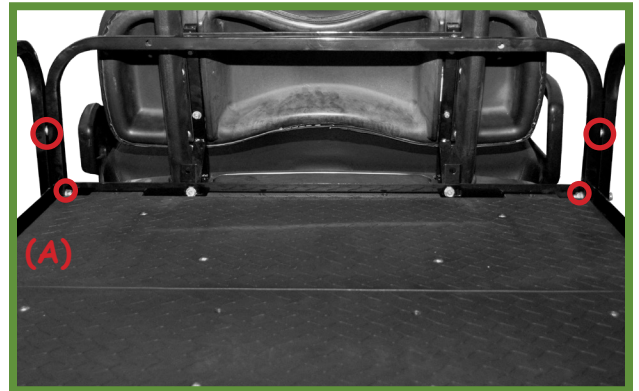
### STEP 11



#3 Phillips Tip, 17mm Socket & Wrench

A) Attach **Seat Back Support Bar** and **Armests** to **Seat Frame** using 10x70mm bolts from Pack 2.

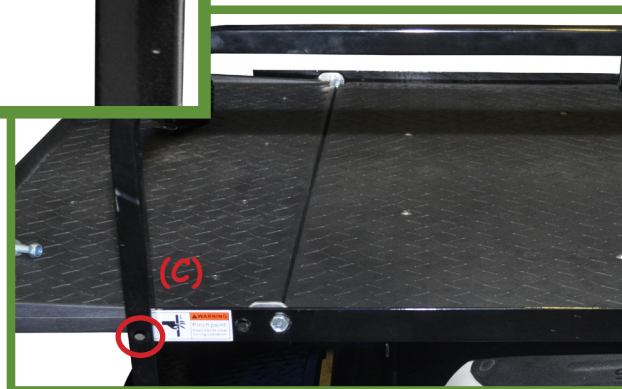
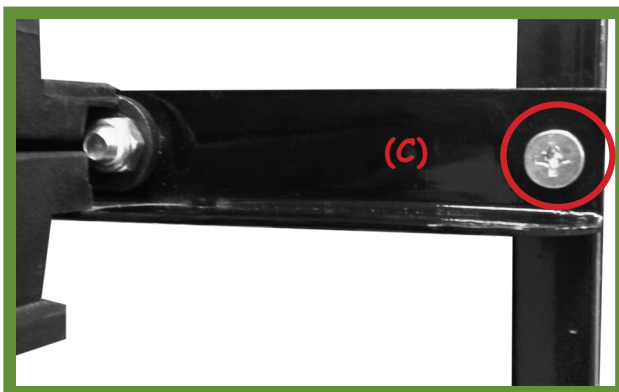
### STEP 12



B) Use rubber spacers from Pack 2 between upper bolts of **Seat Back Support Bar** and **Armest** as shown.

C) Attach **Armest** to rear portion of **Seat Frame** using 10mm Countersunk bolts and Acorn nuts from Pack 2.

*\*Acorn nuts go on the outside of the seat frame.*





17mm Socket & Wrench

(A) Attach **Footrest** to **Bagwell Bracket** using remaining hardware from pack 1.

(B) Attach **Footrest Brackets** to **Footrest** and **Armrest** using 10x70mm bolts from Pack 2.

### STEP 13



10mm Socket or Wrench

Attach **Seat Back Brackets** to **Lean Back Cushion** using hardware from Pack 3. Tighten hardware.

### STEP 14



17mm Socket & Wrench

Attach **Lean Back Cushion** to **Seat Back Support Bar** using 10x45mm bolts from Pack 4.

### STEP 15

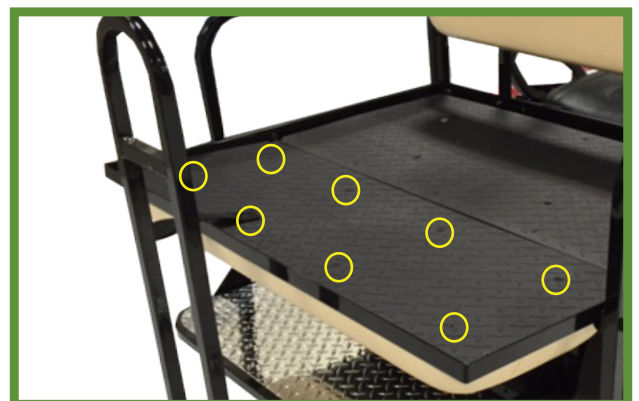


10mm Socket or Wrench

1. Insert Nylon seat strap between flip frame and cushion at desired location.

2. Make sure the thickest part of the seat bottom is towards the rear. Center seat bottom from left to right on flip frame. Using countersunk bolts from Pack 4, tighten the seat bottom to seat frame as shown.

### STEP 16



\*Grab Bar not included\*





5mm Allen Wrench & 13mm Socket

Using hardware retained from Step 1, re-attach canopy as shown.

**STEP 17**



# INSTALLATION COMPLETE

## HARDWARE PACK

### Pack 1

- 6 - 10x25mm Hex Bolt
- 12 - 10x20mm Flat Washer
- 6 - 10mm Nylock Nut
- 2 - 8mm Nylock Nut
- 2 - 6 x 90mm Hex Bolt (**Full Thread**)
- 2 - 6mm Fender Washer
- 2 - 6mm Flat Washer
- 2 - 6mm Nylock Nut

### Pack 2

- 6 - 10x70mm Hex Bolt
- 2 - 10x45mm Countersunk Bolt
- 14 - 10x20mm Flat Washer
- 6 - 10mm Nylock Nut
- 2 - Rubber spacer
- 2 - 10mm Acorn Nut

### Pack 3

- 4 - 6x20mm Hex Bolt
- 4 - 6mm Lock Washer
- 4 - 6x17mm Flat Washer

### Pack 4

- 2 - 10x45mm Hex Bolt
- 4 - 10x20mm Flat Washer
- 2 - 10mm Nylock Nut
- 8 - 8x30mm Countersunk Bolt
- 1 - Nylon Strap



Yamaha® Drive2® is a registered trademarks of Yamaha Golf-Car Company and Yamaha Motor Corporation ("Yamaha"). Reference to Yamaha's trademarks and products is only for purposes of identifying golf carts with which this BU product is compatible. BU products are aftermarket parts and are not original equipment parts. BU is not connected or affiliated with or sponsored by Yamaha Motor Corporation or Yamaha Golf-Car Company.