



# LED LIGHT KIT

WILL FIT \*E-Z-GO® RXV® (2016 & Newer)

## INSTALLATION INSTRUCTIONS

**KIT CONTENTS:**

- LED Headlights
- LED Tail Lights
- Upgrade Harness
- Mounting Screws
- Zip Ties
- Rocker Switch

**TOOLS NEEDED:**

- #2 Phillips Tip
- Cutting Tool
- Sandpaper
- Power Drill
- 15/32" Drill Bit
- Marking Pen
- Scissors
- Tape
- Safety Glasses

LED Headlights



Light Switch

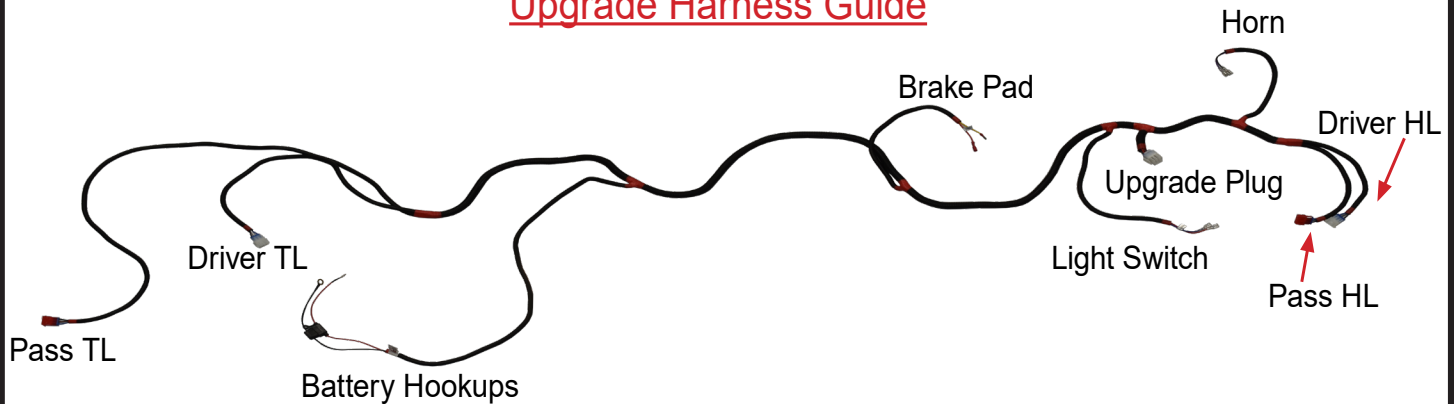


Upgrade Harness




LED Tail Lights

### Upgrade Harness Guide



*Note: This kit is upgrade ready and compatible with the GTW 02-122 Upgrade Light Kit for turn signals, horn, and brake lights. If you are installing both please use the 02-122 instructions along with these to avoid repeating steps.*

 Scissors & Tape

Turn key to the OFF position and switch the cart into TOW mode at battery pack. Cut out tail light template and place it against cart using the body lines and notes on template for alignment.

Draw the inside of the template out with a marking pen. *\*Flip template over for opposite side light.*




 15/32" Drill Bit, Safety Glasses, & Rotary Cutting Tool

**Drill a pilot hole so you will have a starting point to begin cutting.**

Using the template you drew on the car, cut out the light area of the body starting at the pilot hole. Use sandpaper to clean edges.



 #2 Phillips Tip

Place **Tail Light** into the rear of the vehicle. Secure tail light using supplied screws.

*NOTE: Red 3 pin Connector's identify the passenger side front & rear lights.*



 15/32" Drill Bit, Safety Glasses, & Rotary Cutting Tool

Place headlight template against cart using the body lines for alignment. Draw the inside of the template out with a marking pen. Cut out headlight holes using a rotary cutting tool.



*\*Flip template over for opposite side.*

Insert **LED Headlights** into cowl and attach to car using clips located behind the headlight. Ensure the headlight mounting clips engage behind cowl to secure light into place.

**NOTE: Red 3 pin Connector's are for passenger side lights.**



Using the harness layout on the front page as a guide, run wiring harness beside the frame on the **Driver's side**. Secure with wire ties to avoid damage to harness.

Secure wiring harness in the battery box allowing for easy battery connections. Route 3 pin light connections to each light with the red pins going to the passenger side lights.




 15/32" Drill Bit

Using a 15/32" bit, drill out the hole for the **Light Switch** at your desired location.

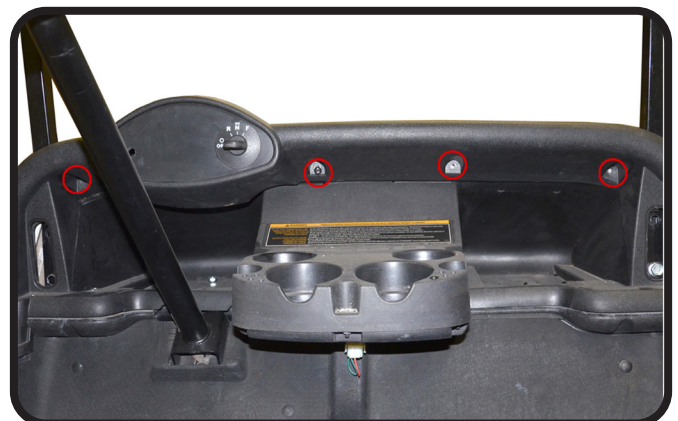
**\*Check before drilling and ensure mounting location is free of obstacles.**



 T30 Torx Socket

Remove the four torx head screws along front brow to gain access to the instrument panel. Retain hardware for reinstallation.

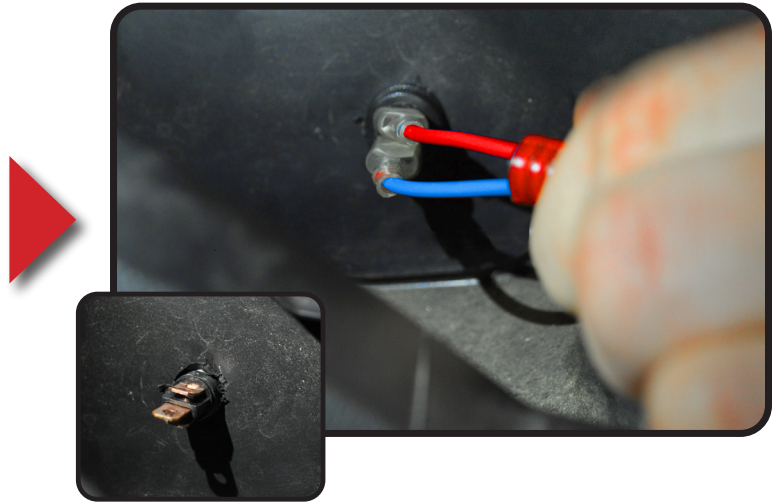
**\*Do not completely remove brow.**





Remove mounting ring nut from back of switch, then feed threaded end of switch through the dash where the hole was drilled. Secure switch to dash with ring nut.

Attach harness to switch, there is no wire orientation. Reattach dash panel using hardware from previous step.

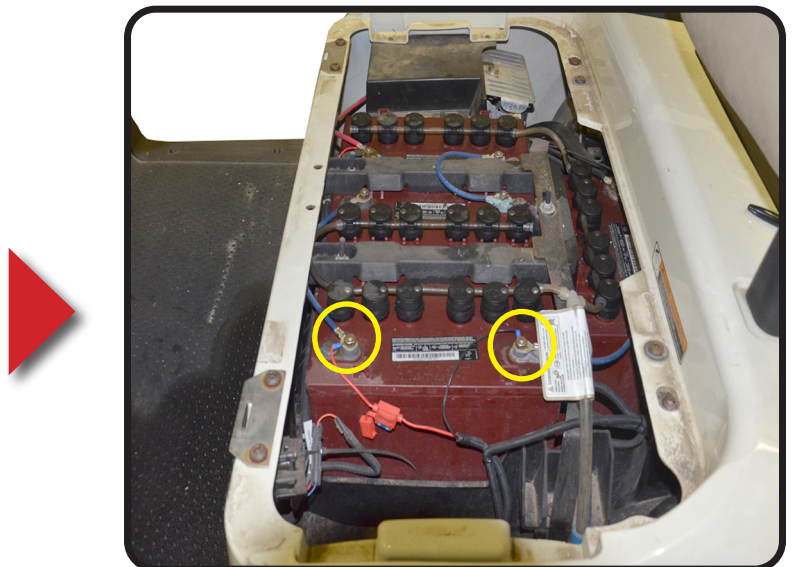


## Battery Pack Connections

***IMPORTANT: This light kit is designed for 12V power. A 48-12v or 16-12 voltage reducer will be needed if no 12v power is available. Follow your reducer instructions for proper installation.***

Connect the wiring harness to one battery's positive connection and another battery's negative connection as shown. Be sure the two batteries used are directly linked to together.

***CAUTION: THIS LIGHT KIT IS A 12V SYSTEM. SUPPLYING MORE THAN 12V TO THE SYSTEM WILL DAMAGE THE LIGHT KIT AND VOID YOUR WARRANTY. DO NOT OVERLOAD.***



# INSTALLATION COMPLETE