

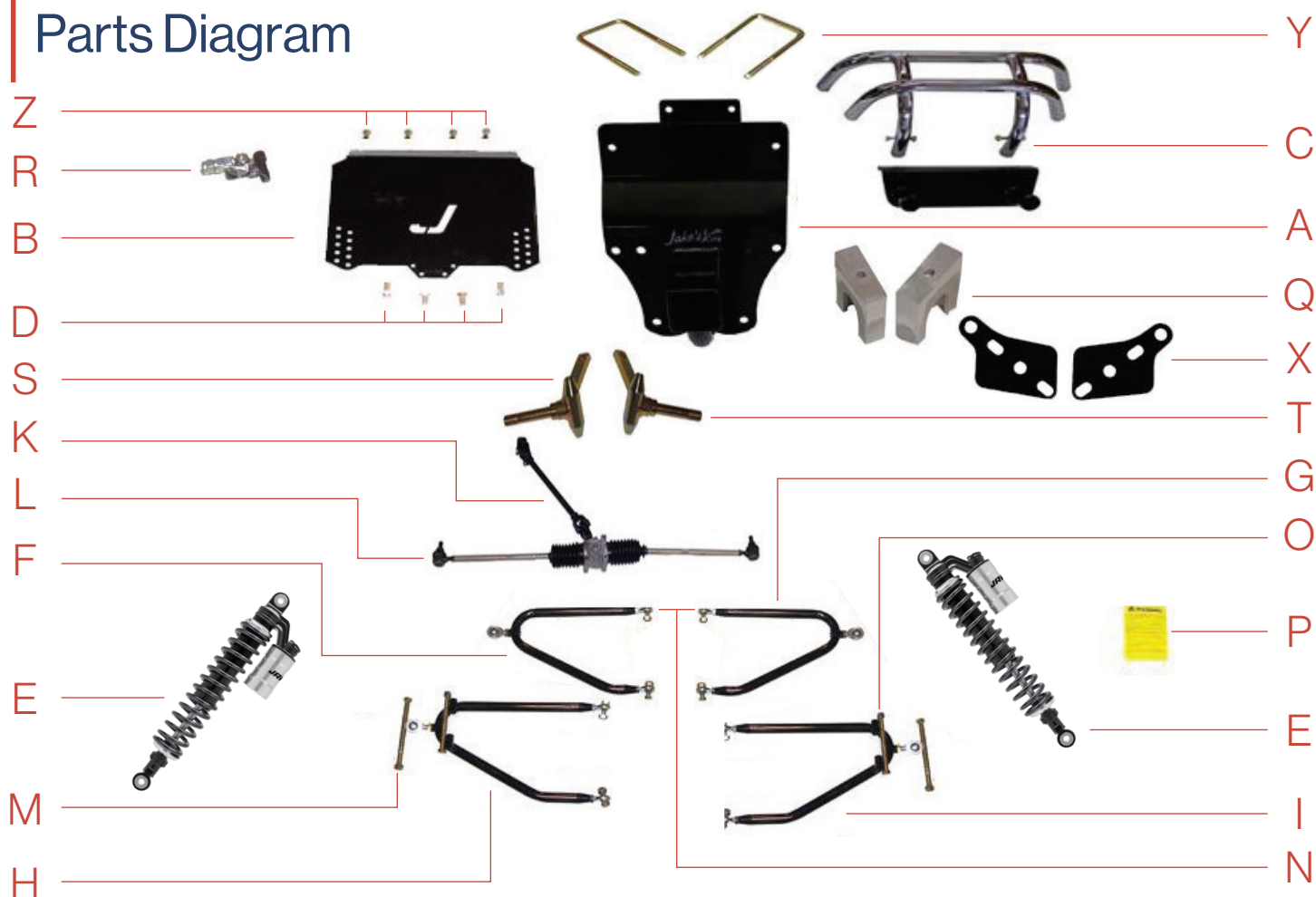


## INSTALLATION INSTRUCTIONS

**Part 16-780**

Long Travel Lift Kit for Gas &  
Electric 2004-Up Club Car DS

# Parts Diagram



CALLOUT	ITEM	QTY
A	JAKES SUB-FRAME	1
B	TOP FRAME SUPPORT	1
C	CHROME FRONT BUMPER & MOUNTING BRACKET	1
D	3/8" X 1" BOLTS & NUTS FOR FRAME SUPPORT	6
E	JAKE'S LONG TRAVEL SHOCKS WITH EXTERNAL RESERVOIR	2
F	PASSENGER SIDE TOP A-ARM	1
G	DRIVER SIDE TOP A-ARM	1
H	PASSENGER SIDE BOTTOM A-ARM	1
I	DRIVER SIDE BOTTOM A-ARM	1
J	7/16" X 3 1/2" BOLTS NUTS & SPACERS (NOT PICTURED)	2/EA
K	STEERING EXTENSION	1
L	STEERING BOX	1
M	1/2" X 6 1/2" KINGPIN BOLT & NUT	2/EA
N	7/16" X 1 1/4" BOLTS & NUTS	8/EA

CALLOUT	ITEM	QTY
O	7/16" X 5 1/2" BOLTS & NUTS FOR SHOCKS	2/EA
P	WARNING LABEL	2/EA
Q	REAR RISERS	2
R	NUTS & BOLTS FOR REAR LIFT	8/EA
S	PASSENGER SIDE SPINDLE	1
T	DRIVER SIDE SPINDLE	1
U	5/16" X 4" BOLTS, NUTS & WASHERS FOR STEERING BOX (NOT PICTURED)	3/EA
V	1/4" X 1 1/2" BOLT & LOCKNUT FOR STEERING EXT. (NOT PICTURED)	1/EA
W	3/8" X 1 1/4" BOLT & LOCKNUT FOR STEERING EXT. (NOT PICTURED)	1/EA
X	REAR SHOCK MOUNTS	2
Y	1/2" U-BOLTS FOR REAR	2
Z	5/16" X 1" BOLTS & NUTS FOR JPLATE & BUMPER	6/EA
Z-1	SHOCK SUPPORTS & 7/16" X 1 1/4" BOLTS & LOCKNUTS (NOT PICTURED)	2/EA

EA=EA**CH**

# Front Assembly

FIGURE 1

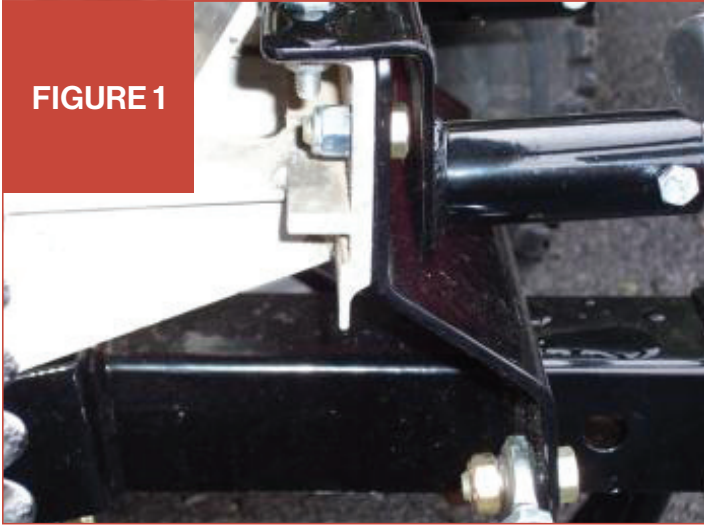


FIGURE 2

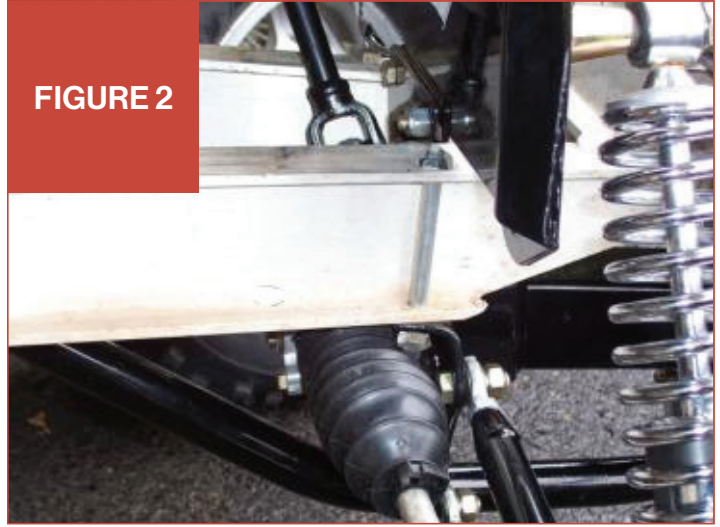


FIGURE 3

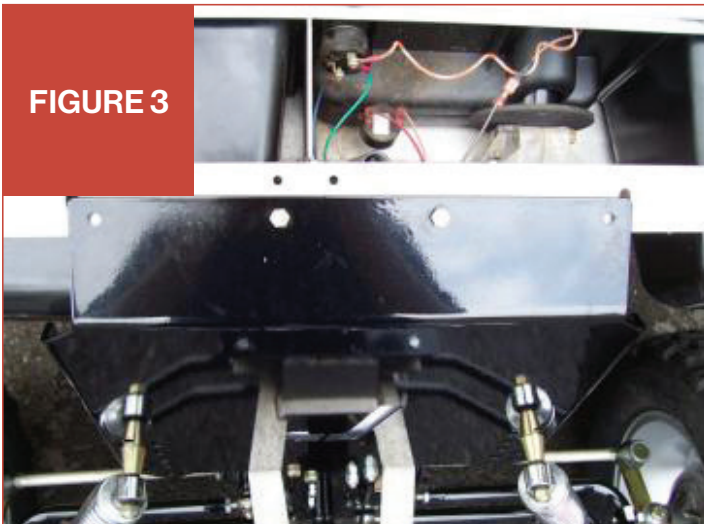
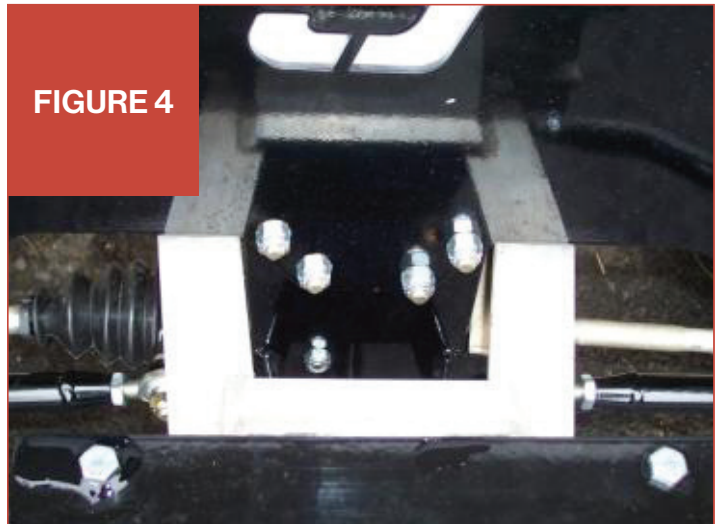


FIGURE 4

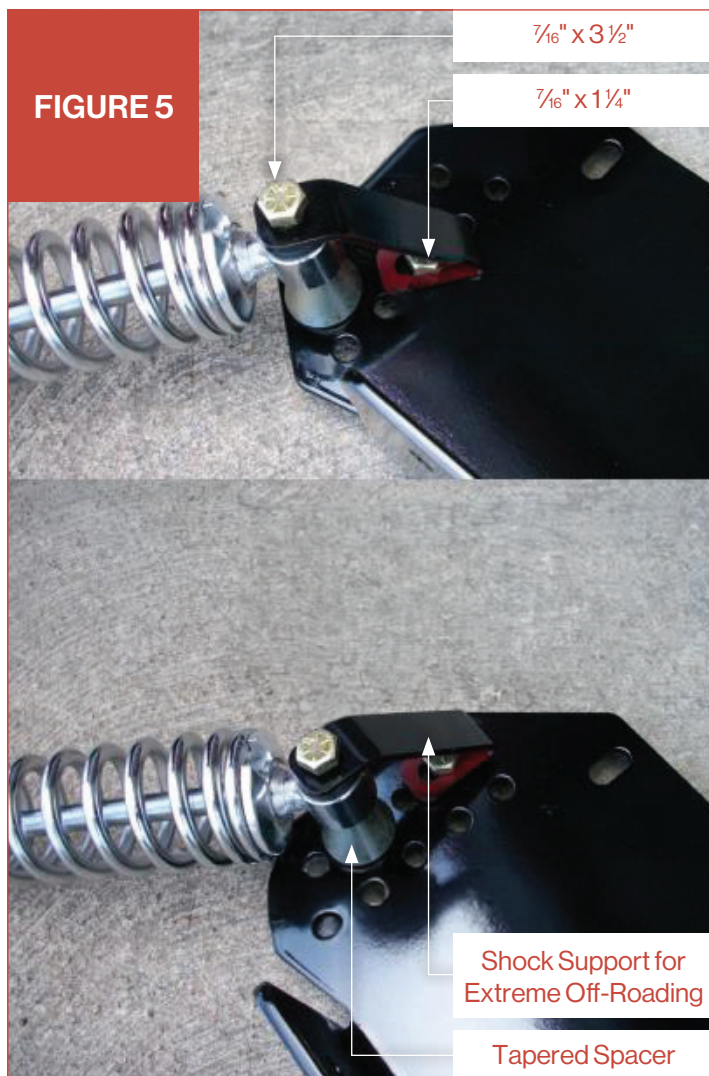


- 1 Place the cart on jack stands.
- 2 Remove front wheel/tires.
- 3 Remove the front cowl.
- 4 Completely disassemble the front of the golf cart. Save the 2 stock  $\frac{3}{8}$ " bolts, nuts, & hubs for reinstallation.
- 5 Mount Jakes sub-frame (ITEM A) to the stock sub-frame location using the supplied nuts and bolts (ITEM D).  
**NOTE:** Nuts must face the front of the cart.  
Using the stock nuts and bolts mount the sub-frame to the frame as shown in Figure 2.  
**NOTE:** Nuts must go on top of the frame for steering box clearance.

- 6 Line the holes in Jakes top frame support (ITEM B) with the holes on the frame as shown in Figure 3.  
**NOTE:** Some models both the center holes will line-up. On other models only 1 center hole will line-up. You will need to drill the remaining 2 or 3 holes  $\frac{5}{16}$ " to mount the top frame support to the cart.
- 7 Mount Jakes top frame support (ITEM B) to the frame and Jakes sub-frame (ITEM A) using the supplied nuts and bolts (ITEM D) as shown in Figure 4.  
**NOTE:** All bolts must be inserted from the rear of the cart. The nuts must be on the front of the frame support (ITEM B) as shown in Figure 4.



# Front Assembly



- 8** Mount Jake's coil over shocks to the top frame support (**ITEM B**) with the appropriate hardware (**ITEM J**) and shock supports (**ITEM Z-1**) as shown in **Figure 5**.

**NOTE:** The larger end of the shock spacer goes against the frame support.

**NOTE:** There are several locations to mount your shocks. Outside holes are for a stiffer ride and inside holes are for a softer ride. The top hole on the outside is for a 6" lift. Each hole below lifts the cart an additional 1".

- 9** Mount Jake's bottom A-Arms (**ITEMS H & I**) to the sub-frame using the appropriate hardware (**ITEM N**) as shown in **Figure 6**.

**NOTE:** A-Arms are marked P-Top, P-Bottom, D-Top, D-Bottom. P=passenger side, D=Driver side.

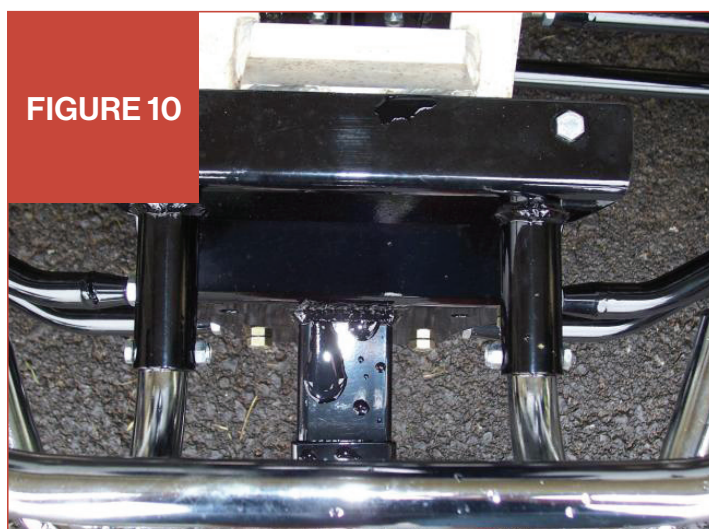
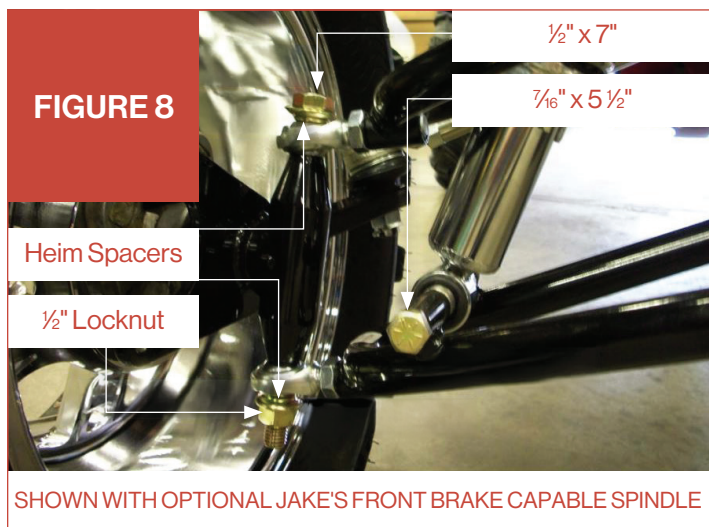
- 10** Mount the shocks to the bottom A-Arms using the appropriate hardware (**ITEM O**) as shown in **Figure 6**.

- 11** Mount Jake's top A-Arms (**ITEMS F & G**) to the sub-frame using the appropriate hardware (**ITEM N**) as shown in **Figure 6**.

- 12** Attach Jake's spindles (**ITEMS S & T**) to the A-Arms using the supplied nuts & bolts (**ITEM M**).

- 13** Mount Jake's steering extension (**ITEM K**) to Jake's steering box (**ITEM L**) using the supplied nut and bolt (**ITEM W**).

# Front Assembly



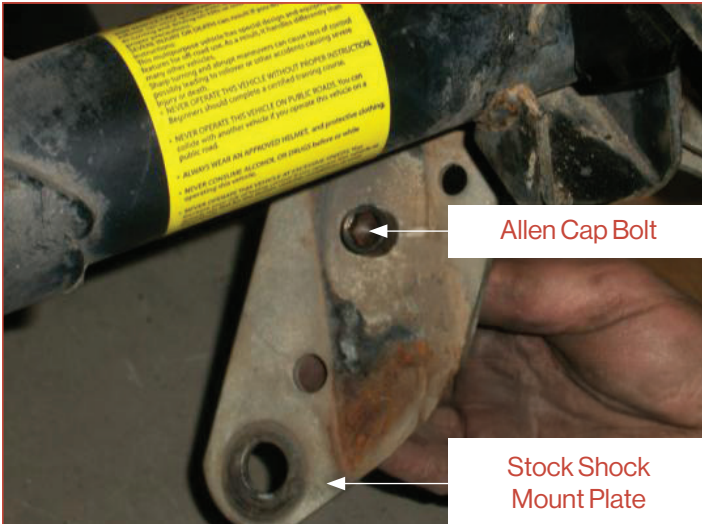
- 14** Loosely mount Jake's steering extension to the stock steering column using the supplied nut and bolt (**ITEM V**). Loosely mount Jake's steering box to sub-frame (**ITEM B**) using the supplied nuts, bolts & washers (**ITEM U**).

**NOTE:** Washers must go between sub-frame & steering box. Securely tighten all bolts as shown in **Figure 9**.

- 15** Attach the tie rod ends to the spindles as shown in **Figure 8**.
- 16** Install the stock hubs to the spindles using the stock hardware. For 2004.5 & newer DS models with plastic dust covers on the front hubs use the supplied slotted nuts & cotter pins for mounting the hubs to the spindles.
- 17** Install recommended 23" x 10.5" x 12" or 22" x 11" x 10" wheels/tires (wheels must be offset).  
**NOTE:** Your stock wheels/tires will not work.
- 18** Adjust toe-in. Proper toe-in should be approximately  $\frac{1}{8}$ " in.
- 19** Mount Jake's chrome front bumper (**ITEM C**) to the frame using the mounting bracket and supplied nuts and bolts as shown in **Figure 10**.
- 20** SECURELY TIGHTEN ALL NUTS AND BOLTS.



# Rear Assembly



**1** Jack up the rear end of the cart and place jack stands on the frame in front of the springs. You will be installing larger wheels and tires so raise the cart high enough to accommodate the additional height. Place a car jack under the rear-end housing of the cart.

**2** Remove the wheels and tires.

**3** Remove the U-bolts from the rear axle on both sides of the cart.

**4** Remove the leaf spring shackle bolts and unhook the bottom of the rear shocks. Clean and lubricate all hardware and save for reinstallation.

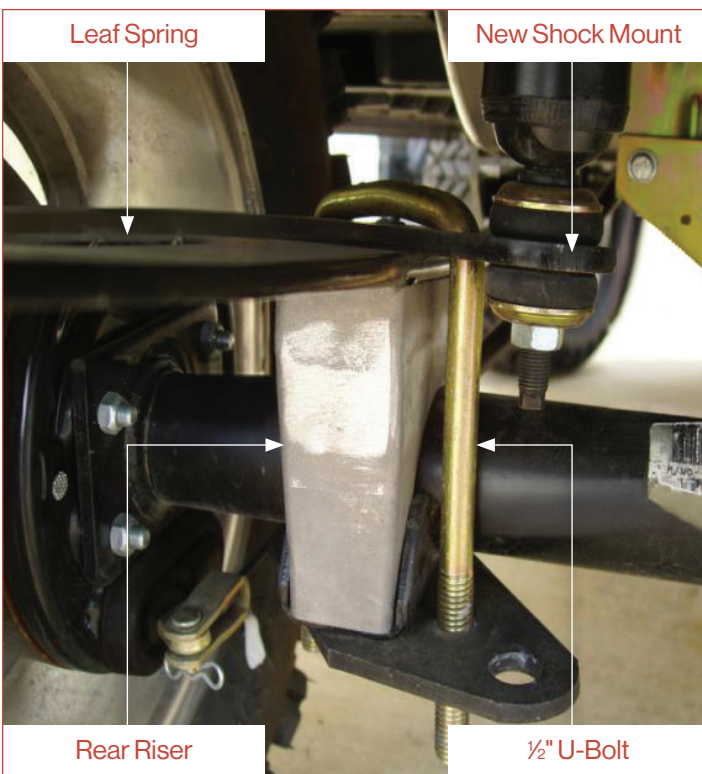
**5** Remove the springs from under the axle on both sides of the cart. Using the car jack lower the rear-end of the cart.

**6** Place the provided allen cap bolt in the center hole of lower stock brake cable mount plate. (allen head up to center plate under rear axle)

**7** Look at the picture of the rear lift provided. The bottom two holes that the u-bolts go through need drilled out to  $\frac{1}{2}$ ". The larger u-bolts provide maximum strength.

**8** Place JAKES rear lift mounts (**ITEM Y**) over the axle, with the shortest end pointed towards the front of the cart. Line the axle with the supplied allen cap screw (**ITEM R**).

**9** Place the springs on the top of the rear lift mounts with the center bolts of the springs in the hole of the rear lift mounts. Using the stock hardware loosely mount the front of the rear leaf springs to the stock leaf spring mount.



## Rear Assembly



- 10** Place JAKES top rear shock mounting plates (**ITEM X**) over the springs with the shock mounts facing in and to the rear.
- 11** Put the U-bolts (**ITEM Y**), through JAKES shock mount plate and through the factory shock mount plate. Using the supplied nuts (**ITEM R**), tighten the U-bolts. Securely tighten.
- 12** Using the factory nuts and bolts attach the shocks to the new shock mounts.  
***NOTE:** If your rear shocks have an eye-lit on use the supplied  $\frac{7}{16}$ " x 1" bolts and nuts to attach the shocks to the new shock mount.*
- 13** Using the stock hardware bolt the rear of the leaf springs to the rear leaf spring mount. **ONCE REAR IS ALIGNED AND IN PLACE SECURELY TIGHTEN ALL BOLTS.**
- 14** Install JAKES recommended wheel and tire size 23" x 10.5" x 12" or 22" x 11" x 10" wheels and tires with a 3" x 5" offset for maximum performance.  
***NOTE:** Your stock wheels and tires will NOT work!*
- 15** Included is a warning label (**ITEM P**) which is to be placed on the steering column or another visible area and is to be read by all operators.



## INDEMNIFICATION & INSURANCE AGREEMENT

High Performance Enhancement Kit purchaser assumes sole and entire responsibility for, and shall indemnify and save harmless Nivel LLC, from any and all claim, liability, responsibility, and persons or property that may be sustained in connection with the use of any product before or after purchase, including but not limited to high performance enhancement lift kits. The High Performance Enhancement Kit purchaser also shall indemnify Nivel LLC harmless with respect to any and all liability that may be Incurred.

Golf Cars are recommended for use only by those aged 16 and older. Golf Cars can be especially hazardous to operate. Always remember that riding and alcohol/drugs don't mix. Never ride on public roads. Never carry more than two passengers (except shuttles and trams). Never engage in stunt driving. Avoid excessive speeds and be particularly careful on difficult terrain. Nivel LLC reserves the right, at any time, to discontinue or change specifications, prices, designs, features, models, or equipment without notice and without incurring any obligation.