

**Club Car DS Economy 4" Lift Kit
Installation Instructions
Part# 7031**



Parts List

- A. Bumper -1
- B. Z-Brackets -4
- C. Steering Extension -1
- D. Bolt Kit -1
- E. Rear Lift Kit -1
- F. Warning Label -1
- G. Templates (not pictured)



Tools Needed

Sawzall, Wrench/RatchetSet,
1/8 & 3/8 Drill Bits, Jack Stands,
Center Punch, Marker

Always remember to wear appropriate eye protection!

Disconnect Battery And Or Batteries! If your car has a run/tow switch place switch into tow position first!



1) Lift the front of the car and place jackstands under the cross member. Make sure you lift the front of the car high enough to pull away the front suspension after the frame is cut.

- 2) Remove the front wheels and tires.
- 3) Remove the stock bumper as shown in (Figure 1).
- 4) Disconnect & remove the stock steering shaft as shown in (Figure 2).



- 5) Cut out the supplied pattern for shock clearance from the supplied template sheet. Using the pattern for shock clearance mark each side of the front cowl as shown in (Figure 3).

6) Using a sawzall or jig saw cut the along the lines on both sides of the front body. This part of the body needs removed for shock clearance.

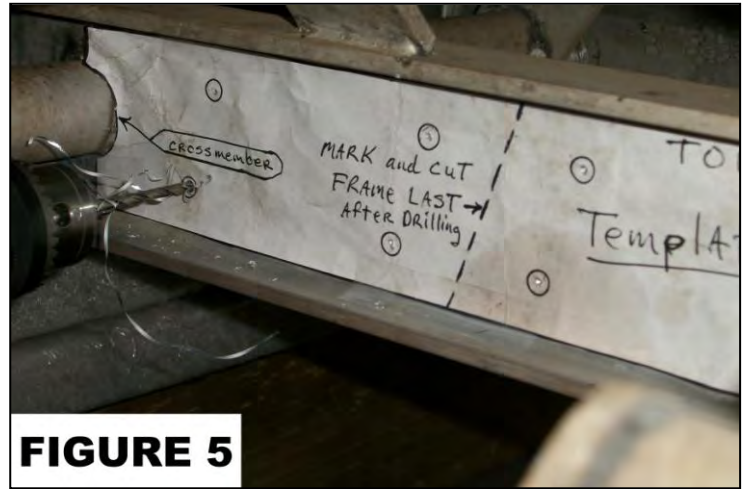


FIGURE 4

FIGURE 5

7) Cut out the right front and left front templates (Item G) from the supplied template sheet. Tape the right front template to the passenger side and the left front template to the driver side. Note there is a notch in each template for the cross member. Tape the template to the center of the aluminum frame on both the driver and passenger side as shown in (Figure 4).

8) Using a marker, mark the top and bottom of the frame on both driver and passenger sides as shown in (Figure 4) using the dotted line in the template as a guide.

9) Using a center punch, mark the 8 ovals on both the driver and passenger side templates as shown in (Figure 5).

10) Drill through each center punched oval with a 1/8" drill bit as shown in (Figure 5).

11) Drill through each 1/8" hole with a 3/8" drill bit as shown in Figure 6.

12) Using a sawzall cut the frame along the marked lines and dotted line of the template on both the driver and passenger side of the frame as shown in (Figures 6 & 7). **NOTE: You should have 2-3 people available to hold and remove the front suspension when cutting the frame.**

13) Using the supplied 3/8 x 1 1/2" bolts, nuts, and washers, loosely mount the rear portion of the Z-brackets (Item B) to the frame as shown in (Figure 8) **NOTE: These parts are universal, there is no left/right or front/rear.**

14) Have 2-3 people hold the removed section of the front frame up the lower mounting Z-brackets and loosely mount the Z-brackets to the front frame using the supplied 3/8 x 1 1/2" bolts, nuts & washers as shown in (Figure 9). When all bolts are started securely tighten all 16 bolts.

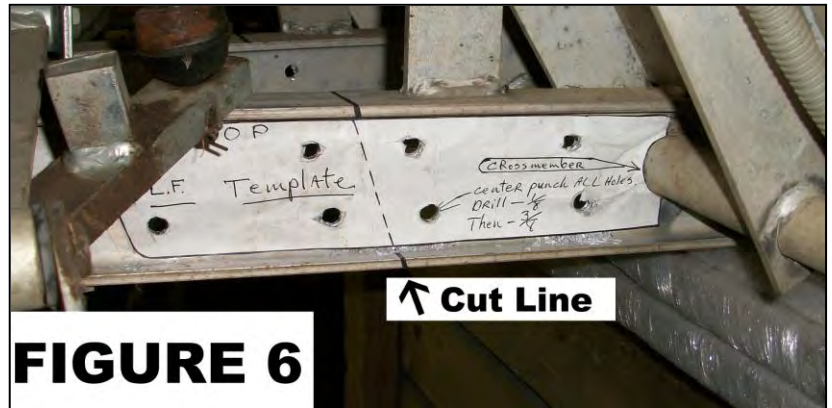
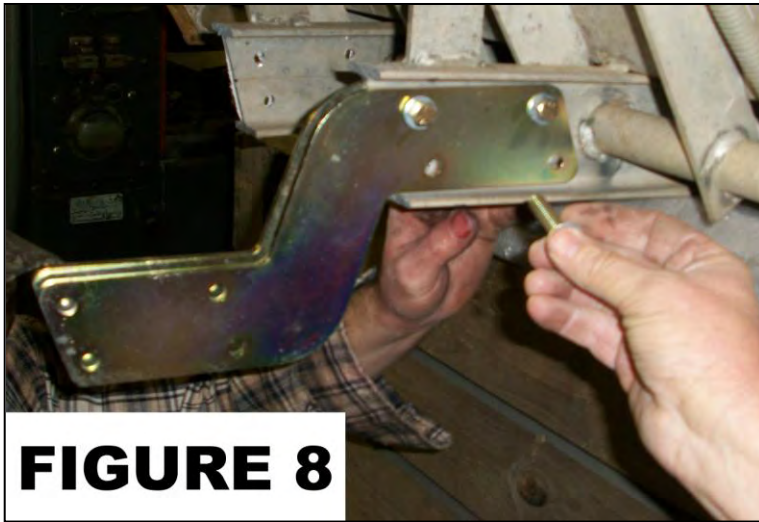


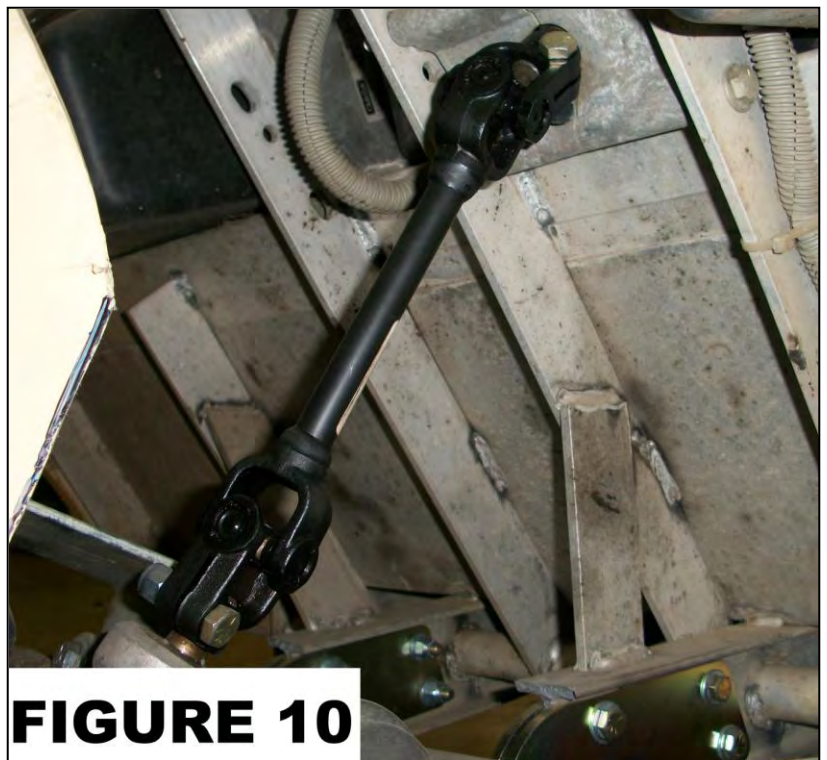
FIGURE 6



FIGURE 7



- 15) Using the supplied steering extension (Item C) bolt the upper steering to the lower steering as shown in (Figure 10). **NOTE: Make sure steering wheel is straight and spindles are pointing straight before installing.**
- 16) Using the supplied 5/16 x1" button head bolts, mount the supplied bumper (Item A) to the stock bumper mount and stock body as shown in (Figure 11).
- 17) Included is a warning label (Item F) which is to be placed on the steering column or another visible area and is to be read by all operators.



Indemnification And Insurance Agreement

High Performance Enhancement Kit purchaser assumes sole and entire responsibility for, and shall indemnify and save harmless Nivel LLC, from any and all claim, liability, responsibility, and persons or property that may be sustained in connection with the use of any product before or after purchase, including but not limited to high performance enhancement lift kits. The High Performance Enhancement Kit purchaser also shall indemnify Nivel LLC harmless with respect to any and all liability that may be incurred.

Golf Cars are recommended for use only by those aged 16 and older. Golf Cars can be especially hazardous to operate. Always remember that riding and alcohol/drugs don't mix. Never ride on public roads. Never carry more than two passengers (except shuttles and trams). Never engage in stunt driving. Avoid excessive speeds and be particularly careful on difficult terrain. Nivel LLC reserves the right, at any time, to discontinue or change specifications, prices, designs, features, models, or equipment without notice and without incurring any obligation.

Rear Installation

- 1) Raise rear end of the car and place jack stands on the frame in front of the springs. You will be installing larger wheels and tires so raise the car high enough to accommodate the additional height.
- 2) Remove the wheels and tires.
- 3) Remove the U-bolts from the rear axle on both sides of the car.
- 4) Remove the spring shackles bolts and shocks. Clean and lubricate the shock bolts and save them to reattach the shocks later.
- 5) Remove the springs from under the axle on both sides of the car.
- 6) Place the provided allen cap bolt (Item J), (allen head up) in the center hole of the lower stock brake cable mount plate to center rear axle as shown in (Figure 1)
- 7) Place Jake's rear risers over the axle as shown in (Figure 2).
- 8) Line the axle with the supplied allen cap screw as shown in (Figure 2).
- 9) Place the springs on the top of the rear lift mounts with the center bolts of the springs in the hole of the rear lift mounts as shown in (Figure 2).
- 10) Place Jake's top rear shock mounting plates over the springs with the shock mounts facing in and to the rear as shown in (Figure 2).
- 11) Put the U-bolts, through Jake's shock mount plate and through the factory shock mount plate. Using the supplied nuts, tighten the U-bolts as shown in (Figure 2). **Torque Securely!**
- 12) Using the factory nuts and bolts connect the shocks to the new shock mounts. **Note: If you have an older model gas car and your shock has an eye on the bottom instead of a stem you need to bend this plate 90 degrees to connect the shock.**
- 13) Double check all bolts for correct torque.
- 14) Install wheels and tires.

